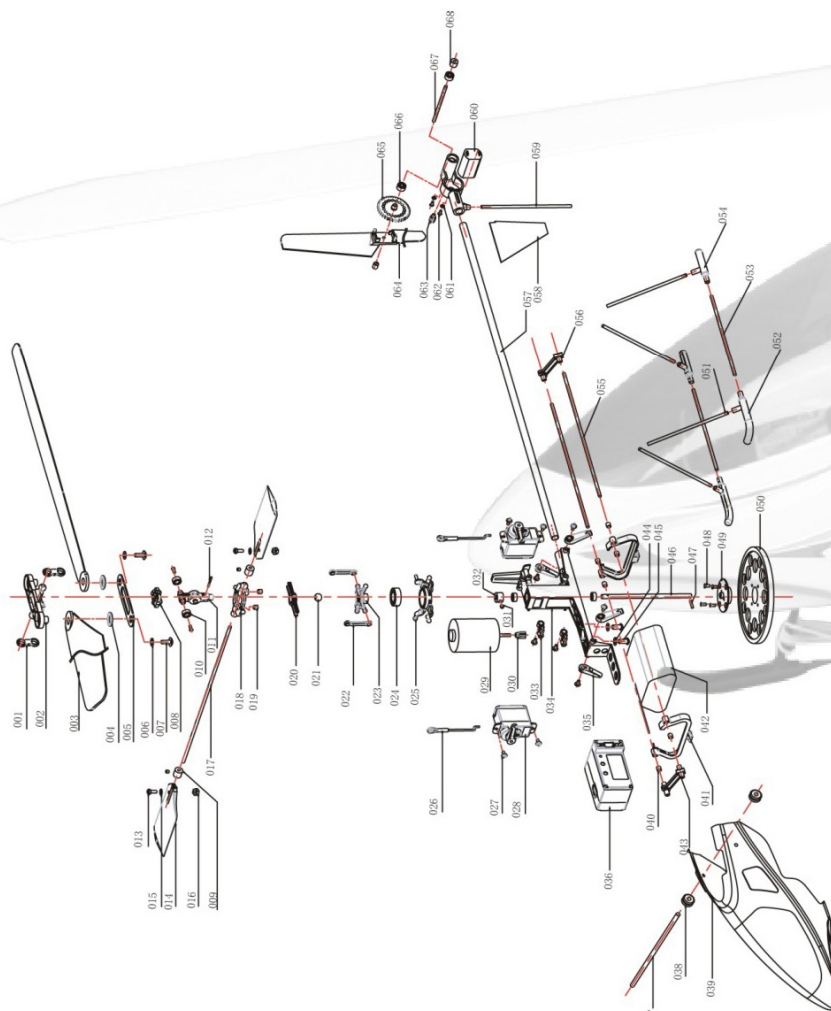


Item No.	Description	Qty. needed in one helicopter	Item Number	Description	Qty. needed in one helicopter
001	Main blade control link	2	035	Ball link	2
002	Main blade mount	1	036	4 in 1 controller	1
003	Main blade	2	037	Cabin fixed bar	1
004	Fixed collar	2	038	Grommet	4
005	Stator for main blade	1	039	Cabin	1
006	Washer	2	040	PVC tube	9
007	Cap screw (M2.5)	2	041	Battery holder	2
008	Rotor head	1	042	Battery pack	1
009	Collar	2	043	Bar joiner	2
010	Bearing (6*3*2.5)	4	044	Main motor washer	1
011	Center hub	1	045	Main motor screw (M3)	2
012	Bushing	2	046	Main shaft	1
013	Screw (M2.6)	2	047	Main shaft pin	1
014	Paddle	2	048	Main gear screw	4
015	Washer	2	049	Main gear fix set	1
016	Nut	2	050	Main gear	1
017	Fly-bar	1	051	Strut A	4
018	Paddle control frame (outer)	1	052	Skid A	2
019	Socket head cap screw (M3)	2	053	Strut B	2
020	Rotor bar	1	054	Skid B	2
021	Copper ball	1	055	Battery hanger bar	2
022	Paddle push-rod	2	056	Bar joiner	2
023	Swash-plate	1	057	Tail boom	1
024	Bearing (13*7*4)	1	058	Vertical fin	1
025	Swash-plate (outer)	1	059	Tail protect bar	1
026	Servo push-rod	2	060	Tail motor	1
027	Screw for servo (pw1.7*4)	4	061	Washer	2
028	Servo	2	062	Screw (M1.3)	2
029	Main motor	1	063	Tail motor pinion	1
030	Main motor pinion	1	064	Tail blade	1
031	Socket set screw (M3)	3	065	Tail gear	1
032	Set collar	1	066	Bearing (2*6.3)	2
033	Servo control	2	067	Tail rotor shaft	1
034	Main frame	1	068	Spacer	1

Exploded view

000515



SPECIFICATION OF HONEY BEE

000515



1. Content:

- 1). A complete honey bee ready to fly.
- 2). 8.4V/ 650mah Ni-MH battery pac
- 3). wall charger for battery
- 4). Standard PPM transmitter (4CH)
EK2-0404

2. Specification

- 1). Main rotor diameter: 520mm
- 2).Fuselage length: 520mm
- 3).Max all-up-weight: 290g
- 4).Power: 8.4VNi-MH battery pack
- 5).Radio: 4CH/PPM

3. Description

- ★ Pre position servo mounts for easy setup
- ★ Carbon fibre fly-bar and boom for superior strength and durability.
- ★ High performance main electric drive motor for extended duration flight.
- ★ Unbelievable flight performance 12 minutes on 7cell Ni-Mh battery
- ★ Ready for flight out of box except 8 AA battery (sold separate)

000515

ORDER NO. ILLUSTRATION



Tail motor 8T 0.5m

000207



Main motor 10T 0.5m

000156



Charger 230V (UK)

000164



Charger 220V (china)

000167



Charger 110V (USA)

000166



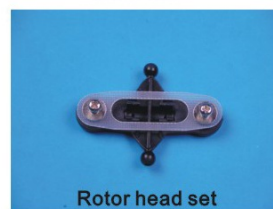
Charger 230V EUROPEAN

000165



8.4V 650mAh Ni-MH battery

000169



Rotor head set

000187



Main blade

000188



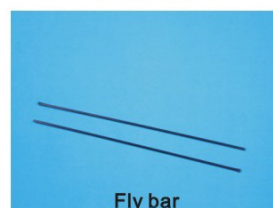
Control link main blade

000189



Center hub set

000190



Fly bar

000191



Paddle control frame(outer)

000192



Swashplate set

000193



Servo Push-rod link set

000194



Battery hanger

000195



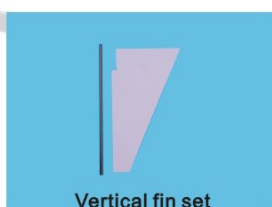
Bearing 3*6*2.5

000196



Tail rotor housing

000197



Vertical fin set

000205



Tail rotor drive & shaft set

000199



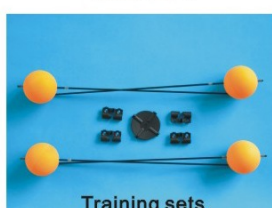
bearing 2*6*3

000200



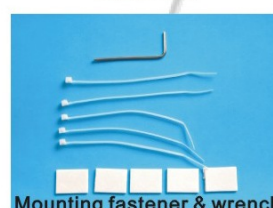
Tail rotor blade

000201



Training sets

000202



Mounting fastener & wrench

000204



Tail motor heat sink

000208



Main motor heat sink

000209



Screws/nuts/washers

000210



Main & tail motor wire

000211



Paddle set

000216



Main shaft drive gear set

000223



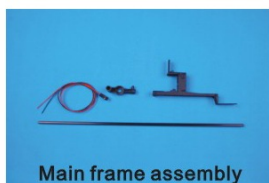
Skid set

000224



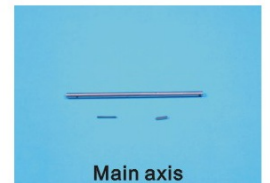
Batter support & skit set

000225



Main frame assembly

000233



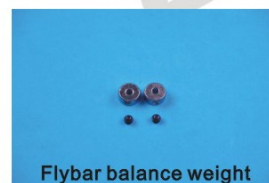
Main axis

000237



Shaft retaining collar

001097



Flybar balance weight

000238



Servo control set

000239



4in1 mixing controller

35M	000108
36M	000109
40M	000110
41M	000111
72M	000112

000237



Servo

000155



Cabin

000242



4CH transmitter

	Model 1	Model 2
35M	001642	000076
36M	001643	000077
40M	001644	000078
41M	001645	000079
72M	001646	000080

000152



Coach wire

000500



Softdog for FMS

000499



000173



000152



000512